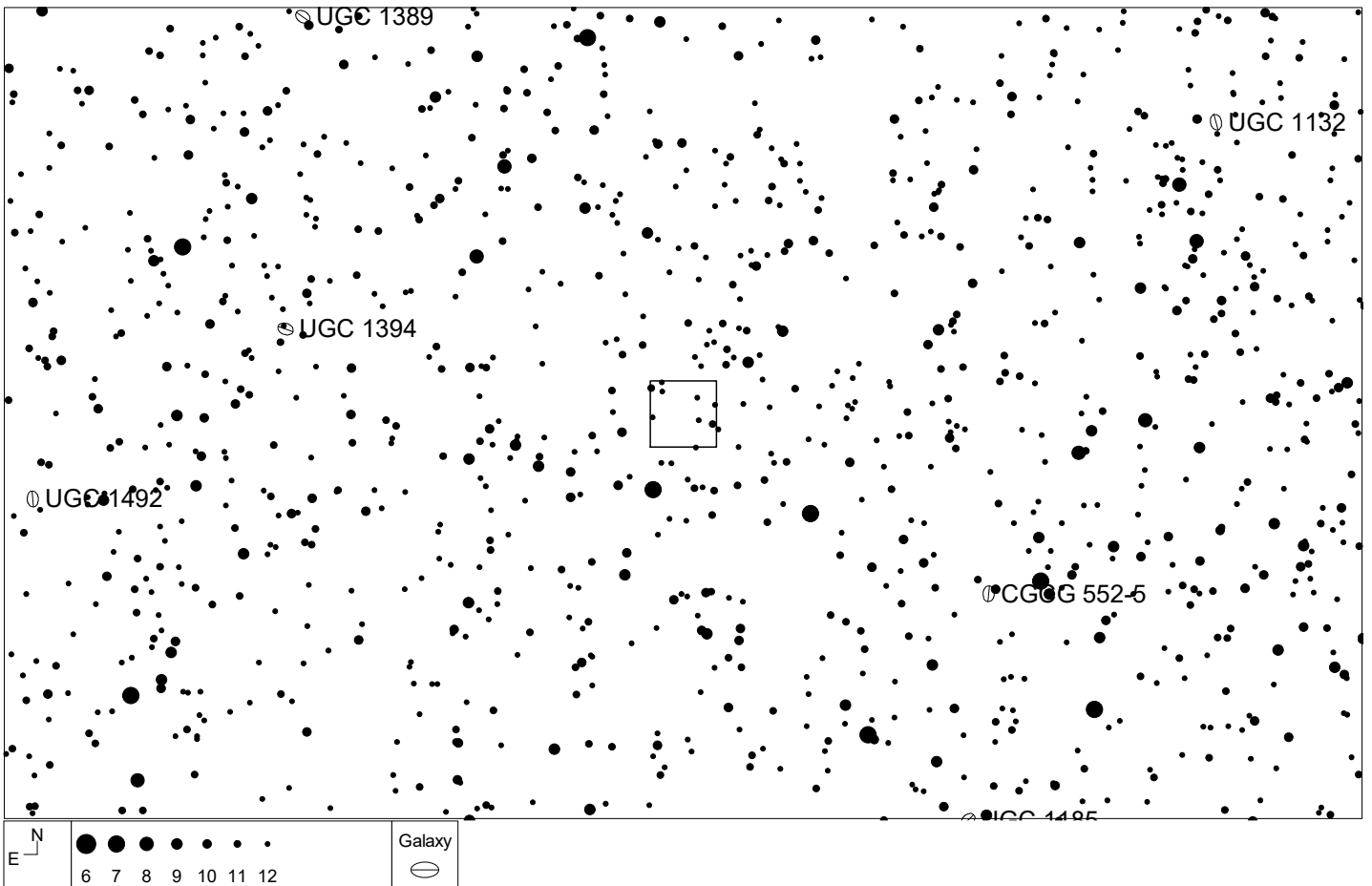
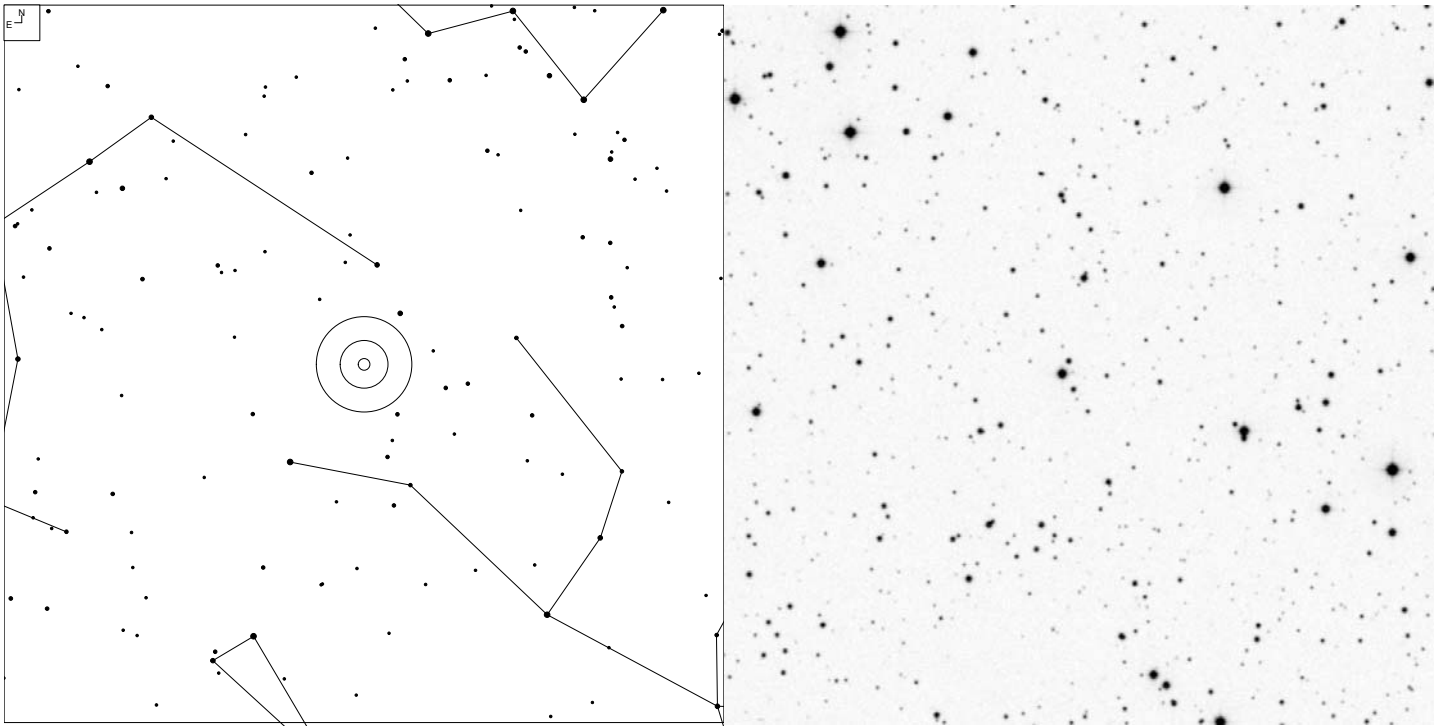


J014709+463037 Andromeda's Parachute (quad lensed quasar)



Coords: 01 47 09 +46 30 37 Separation: 1.3 – 3.4" apart. R mag 15.4 – 17.7. Component D is much less than 19

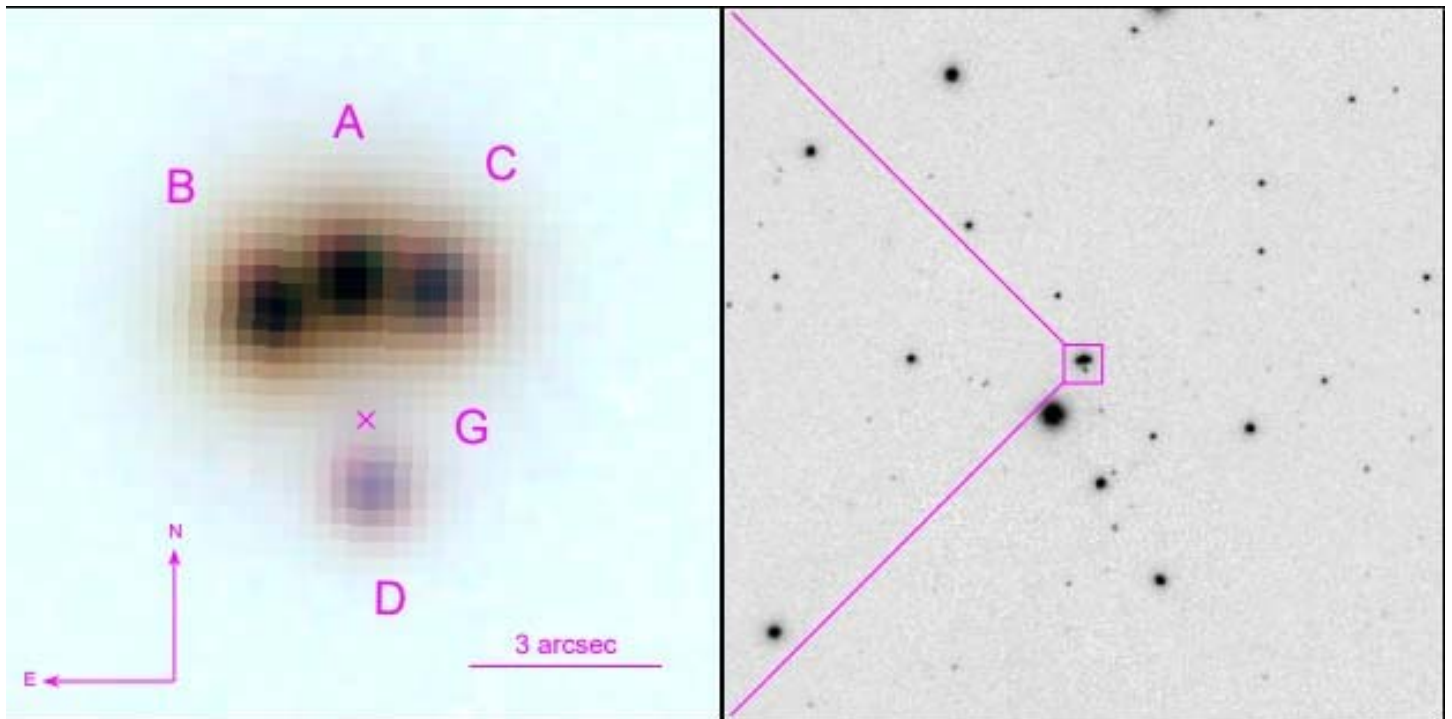


Fig. 1.— PS1 images of the lens candidate showing the four quasar images (A-D) with the lensing galaxy position G marked with an x. Left: close-up color image using the g (blue), i (green), and y (red) filters. The Gaia position for component D (26.792307, 46.511273) is used as absolute astrometric reference position for this system. Right: y-band image of a 2' region around the system. The bright star southeast of the lens is saturated in the other bands

Source of image: Discovery of the first quadruple gravitationally lensed quasar candidate with Pan-STARRS

<https://arxiv.org/pdf/1705.08359.pdf>

Article regarding discovery: <https://arxiv.org/pdf/1707.05873.pdf>